



HORWOOD HOUSE

HOTEL | SPA | ESTATE



MEETINGS AND EVENTS





Meet at your place in the country

We've undergone a complete transformation that has preserved the beauty of our Grade II listed manor house while carefully adding modern touches – so you have everything you could need to meet, retreat and relax.

Built in 1911, the Arts and Craft house with its lily pond and manicured gardens provides a stunning backdrop for your event. Legendary gardener Percy Thrower was born here and his horticultural influence is everywhere from the artwork in the house to the manicured grounds.

Now proudly independent and newly refurbished, we are here to help you create a one-of-a-kind event – in stunning surroundings and with our signature service that always comes from the heart.

We look forward to welcoming you to your place in the country.

Caroline Morrone
GENERAL MANAGER

We offer a range of stylish, well-equipped spaces that can be adapted to suit your event perfectly.

Meet & Retreat

Horwood House is home to everything from stylish boardrooms to grand, light-filled conference spaces for up to 270 guests.

With 15 meeting rooms and stunning grounds extending to 38 acres, you can stage events that bring people together in elegant surroundings and also provide opportunities for team-building and outdoor activities.

For refreshment, Harry's Bar & Kitchen and our 1911 restaurant are bright, contemporary spaces serving a wide array of menus and buffets that showcase the best local and seasonal ingredients.

For the full retreat experience, there is our brand new H Spa. This stylish sanctuary features a 15m pool, poolside stone loungers, sauna and steam room, six treatment rooms and a modern, fully-equipped gym.



Harry's Bar & Kitchen



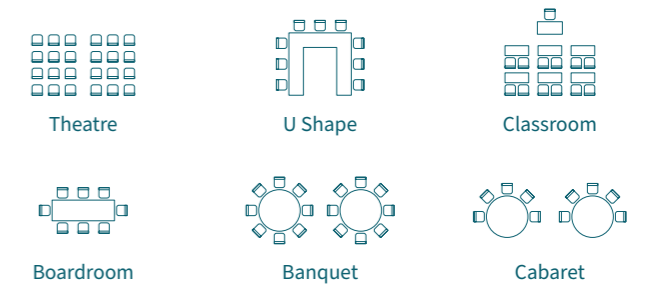
Burton

CAPACITIES AND DIMENSIONS

Room Name	Cab FP	Cab BP	Theatre FP	Boardroom	U Shape	Classroom	Banquet	Reception	Dinner Dance	Floor	Length (m)	Width (m)	Height (m)	SQM
Cook Suite	150	130	250	70	60	100	200	250	180	Ground	18.3	12.4	3.45	226.9
Cook 1	75	x	125	35	30	50	100	125	x	Ground	10	12.4	3.45	124
Cook 2	75	x	125	35	30	50	100	125	x	Ground	10	12.4	3.45	124
Oates	32	x	40	25	20	20	x	x	x	Lower Ground	10.3	6.4	3	65.9
Cabot	x	x	20	12	x	x	x	x	x	Lower Ground	6.2	5.3	3	32.9
Frobisher	x	x	28	14	x	x	x	x	x	Lower Ground	8	4.2	3	33.6
Scott	x	x	18	12	x	8	x	x	x	Lower Ground	6.4	4.5	3	28.8
Wilson	x	x	24	8	x	8	x	x	x	Lower Ground	6.2	5.3	3	28.8
Shackleton	x	x	18	12	x	8	x	x	x	Lower Ground	5.2	4.6	3	23.9
Eyre Suite	64	56	168	50	40	60	80	120	70	Ground	19.15	7.9	3.62	151.2
Eyre 1	32	x	84	25	20	30	40	60	N/A	Ground	9.5	7.9	3.62	75
Eyre 2	32	x	84	25	20	30	40	60	N/A	Ground	9.5	7.9	3.62	75
Columbus	40	x	70	22	24	24	60	x	40	Ground	12	7.4	3	88.8
Drake	22	x	28	16	16	14	x	x	x	First	8	5.3	3	42.4
Burton	x	x	x	12	x	x	12	x	x	Ground	6.3	3.5	2.4	22
The Library	x	x	x	12	x	x	12	x	x	Ground	5.9	5.1	3.3	30.9
Drawing Room	32	x	80	30	x	x	60	80	x	Ground	12	5.5	3.3	66

KEY: - Cab FP: Cabaret Front Projection Cab BP: Cabaret Back Projection FP: Theatre Front projection

ROOM LAYOUTS



FULLY CONNECTED AND PERFECTLY PRESENTED

Most of our meeting and conference rooms are equipped with:

- Superfast WIFI
- Air conditioning
- Wireless VIA GO presentation equipment with iOS, Android, Chromebook, PC and MAC connectivity
- Advanced presentation technology such as crystal-clear mirror images and video playback

The Manor House

THE LIBRARY

This characterful room is inspired by the building's horticultural heritage and is packed with original features from the ornate ceiling and exquisite wallpaper to the carved stone fireplace.

With dual-aspect windows and views down the tree-lined drive, the The Library is an elegant and bright setting that works well for anything from executive board meetings and small presentations, to afternoon tea and private dinners.

THE DRAWING ROOM

Rich with history, this grand and ethereal space is popular as a venue for drinks receptions, larger business meetings and dinners.

The original stone fireplace takes centre stage, with the huge bay window offering views across the lawns. The doors lead down stone steps to the Lily Pond and Secret Garden beyond, giving guests the chance to stretch their legs and enjoy summer lawn games, BBQs and al fresco drinks receptions.

Connected to the Drawing Room is the panelled Manor Bar as well as the The Library and Manor Lounge – all great areas for break-out spaces or evening drinks.

Perfect for informal events where guests can use all the spaces, take a seat and mingle throughout the ground floor all whilst feeling like it's one space, a space steeped in heritage.



The Library



Drawing Room

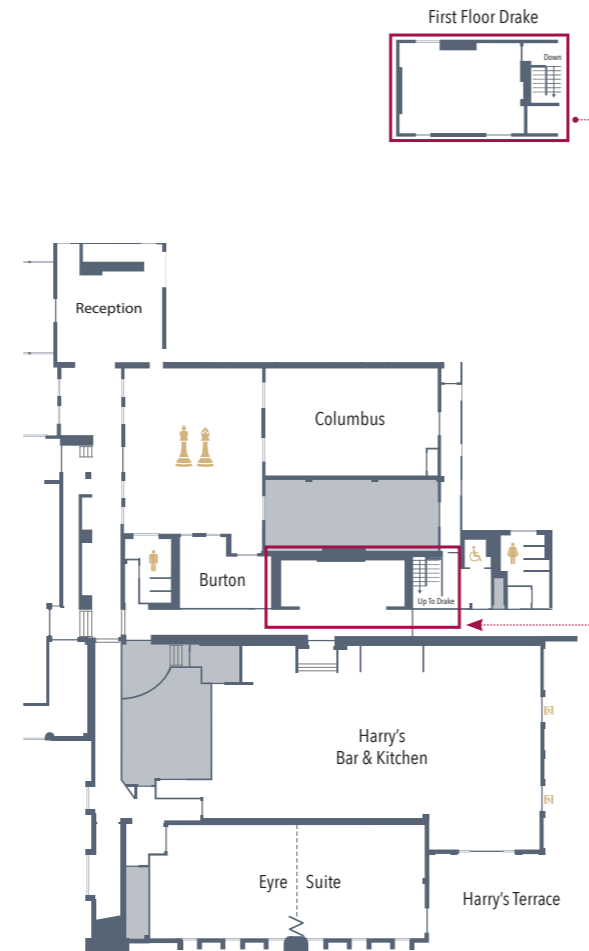
Contemporary spaces with classic touches

EYRE SUITE

Ideal for events where you want to enjoy both the inside and outside, the Eyre Suite is a grand, bright space.

Handily located next to Harry's Bar & Kitchen, the Suite is popular for car events, product launches, private dinners and conferences. This light and spacious room has its own bar and access to the terrace, allowing events to spill onto the lawns which are perfect for team-building activities, BBQs and evening drinks.

Built-in audio-visual equipment and a large screen mean the space is set up ready for your presentation, and dividing walls give you flexibility in how the room is used and styled.



Columbus

COLUMBUS

This flexible space with lots of natural daylight is ideal for smaller meetings, private dining and indoor team building activities of 30-40 people.

Part of the old stable building, the Columbus Suite is rich with Horwood House history while also featuring all the modern touches you want in a meeting space, such as air conditioning, presentation equipment and comfortable, stylish furnishings.



Eyre Suite



Eyre Suite



Drake

DRAKE

Ideal for board meetings, the Drake Suite can also be configured for video conferences, hybrid meetings and other set-ups.

Situated on the first floor and close to the main house, it is fully equipped with air conditioning and the latest audio visual technology, including a wide-screen TV.

The Cook Suite & Wing

Our largest space, the Cook Suite is a popular venue for conferences, product launches, awards dinners, banquets and corporate presentations.

This neutrally decorated, air-conditioned room is a blank canvas for all kinds of events and can be flexibly configured thanks to its dividing wall. With integrated speakers and two presentation screens, it is ideal for hybrid meetings and video conferencing, with the option to add relay screens.

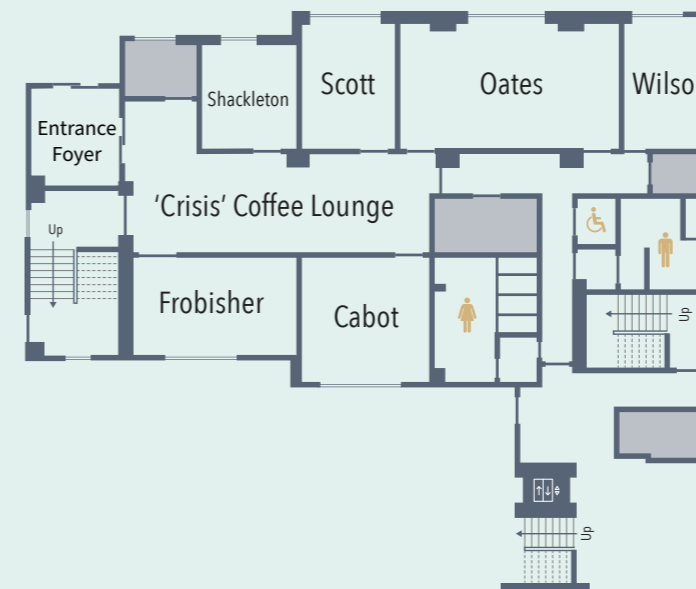
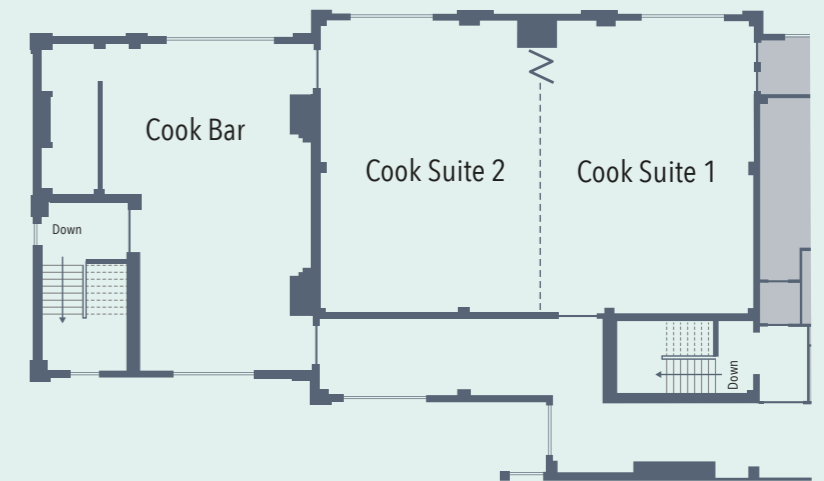
As well as a separate large break-out area with tea and coffee station and bar, the suite also has a private entrance from outside with foyer providing exclusivity and privacy. This works well for awards ceremonies and conferences where you want to keep everyone together and also have ease of set up.

Beyond the Cook Suite, this wing of the building also has six syndicate rooms that you can add to your booking, perhaps for extra break-out space.

Immediately outside is the Cook lawn, an ideal space with countryside views that's a favourite for team building exercises.



GROUND FLOOR
COOKE SUITE



LOWER GROUND
FLOOR WING



Food & drink

Our Executive Head Chef works closely with local suppliers to deliver a daily conference buffet that features regional favourites and changes with the seasons.

Melt-in-your-mouth Arancini, choice charcuterie, roasted salmon with plum tomato sauce, tiramisu – whatever's on the menu that day is served in the bright and welcoming surroundings of our 1911 Restaurant.

With its botanical décor and country chic vibes, Harry's Bar & Kitchen is our contemporary restaurant that celebrates the horticultural heritage of our hotel. Open for lunch and dinner and featuring a sun trap terrace, it is the ideal place for a spot of lunch or a group evening meal.



Private dining

Hosting dinner in one of our stylish private dining rooms is a wonderfully exclusive way to enjoy Horwood House. Our Executive Chef and his team can create an inventive menu tailored to your event.

Located right next to Harry's Bar, our Burton Suite overlooks our giant chessboard, while The Library is a stunning room full of period character with views down the tree-lined driveway. Both dining rooms seat up to 12 guests.

For larger gatherings, our elegant Eyre Suite hosts up to 80 guests for dinner or 120 for drinks or informal buffet, while the Cook Suite is perfect for gala dinners and awards ceremonies up to 200 guests.

A breath of fresh air

Enveloped by 38 acres of gardens, meadows and woodland, Horwood House is the perfect place to re-connect with nature as part of your event.



And we have room aplenty for anything from inflatables and laser clay pigeon shooting to 'It's a Knockout' experiences and sports days within our Walled Garden or various lawns.

From team-building exercises to executive away-days, every event benefits from wonderful views and a sense of space.

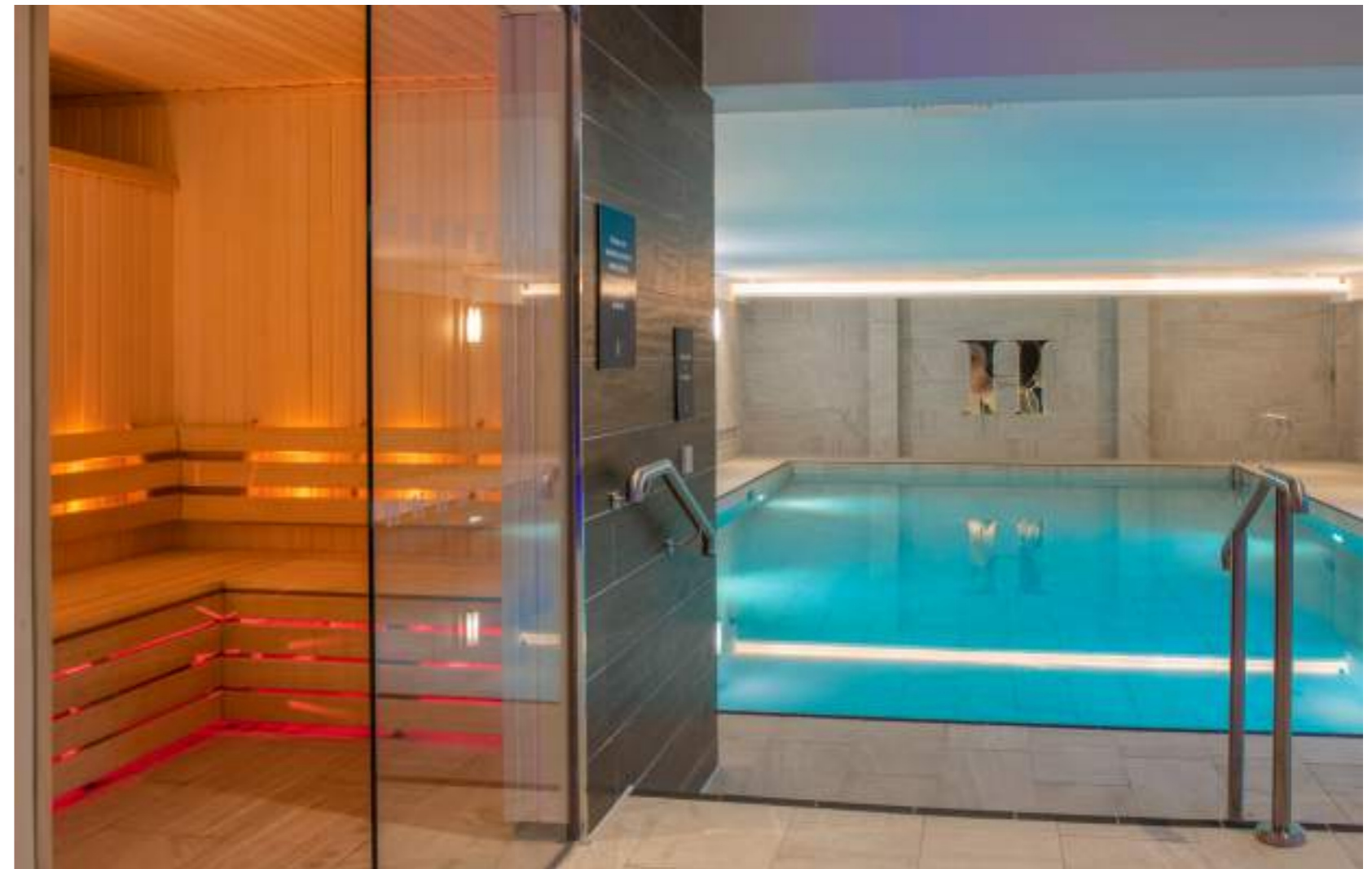
Your guests can enjoy summer parties on the lawn, drinks on the terrace, al fresco dining or evening receptions by the illuminated lily pond.



Up for some downtime?

Located in the heart of the hotel, H Spa is a calming sanctuary where guests can retreat to swim, work out, lounge and be pampered.

The state-of-the-art facilities include a 15m indoor pool, poolside stone loungers, sauna and steam room and six treatment rooms.



Our fully-equipped gym with weights area and collection of Matrix equipment is also available throughout your stay.

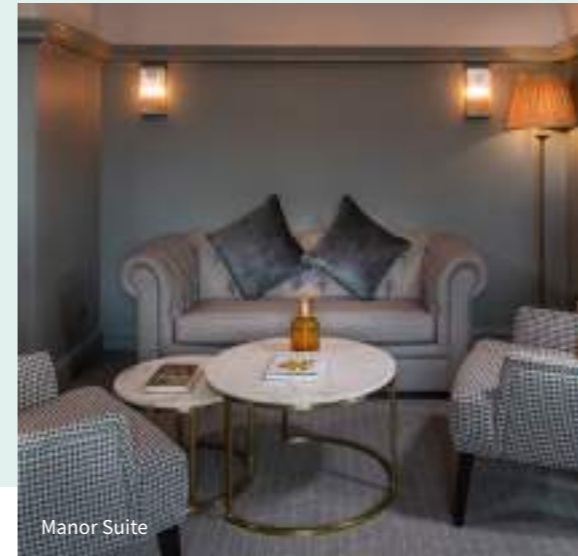




Manor Suite



Manor Suite



Manor Suite

On the top floor of the hotel are the newly refurbished grand Manor Suites.

With their vaulted ceilings, lead light windows and spectacular views down the tree-lined drive or across the lily pond, these rooms take the Horwood House experience to a whole new level.

Art Deco-inspired ensuites feature walk-in showers or baths, twin sinks and come with fluffy robes, while the separate lounge with cosy furnishings and dining table provides comfortable spaces for working, relaxing or entertaining.

Rest your head

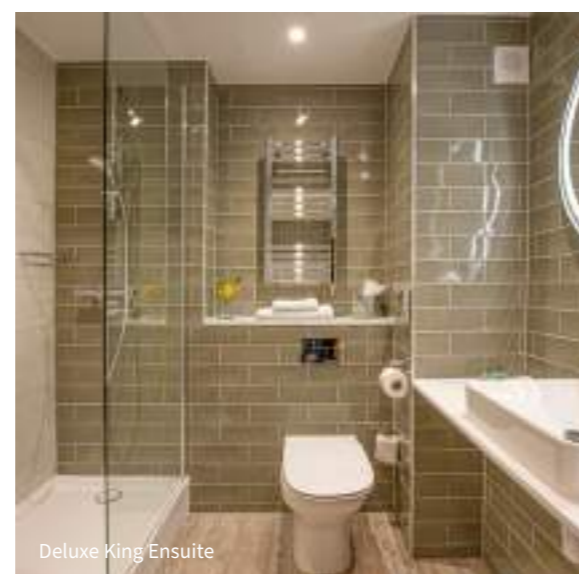
Our 160 bedrooms and suites combine classic style with modern comforts.

Our Executive and Executive Terrace Suites are large, elegant spaces featuring a separate lounge area with space to work and relax, and some have a terrace.

All rooms include a double or king-size bed (with some flexibility to twin), ensuite bathroom, flat-screen TV, hairdryer, iron & ironing board, toiletries and a safe.



Deluxe King



Deluxe King Ensuite



Executive Suite



Horwood House, Mursley Road, Little Horwood, Buckinghamshire MK17 0PH

Where are we?

We are centrally located, only eleven miles from Milton Keynes in the rural tranquillity of Buckinghamshire and perfectly positioned for a retreat from the hustle and bustle of London, Birmingham, Oxford and Cambridge.

Horwood House is a short train journey from London Euston to Milton Keynes station, and we are only 45 minutes from Luton airport and 1 hour 10 minutes from Heathrow airport. Just off the M40 and M1 – Horwood House is easily accessible for all your delegates.

To find out more about how Horwood House can support you with your event plans, please give us a call or email on the details below.

01296 722100 • meetings@horwoodhouse.co.uk
horwoodhouse.co.uk



FOLLOW US

For all the latest news, offers, events, behind the scenes and sneak peeks, follow us on Facebook and Instagram:

  @horwoodhouse

Photography Credits:
Jun Tan Photography